



A Division of Dartez Bros. Construction, Inc.
 107 N Llano ~ Fredericksburg, TX 78624
 830-990-0173 or 830-997-3043
 www.fredericksburg-texas-homes.com

Crabapple Grove Subdivision

1714 Cherrywood Dr.
 Lot # 32 Plan : The Taylor
 \$ 264,000

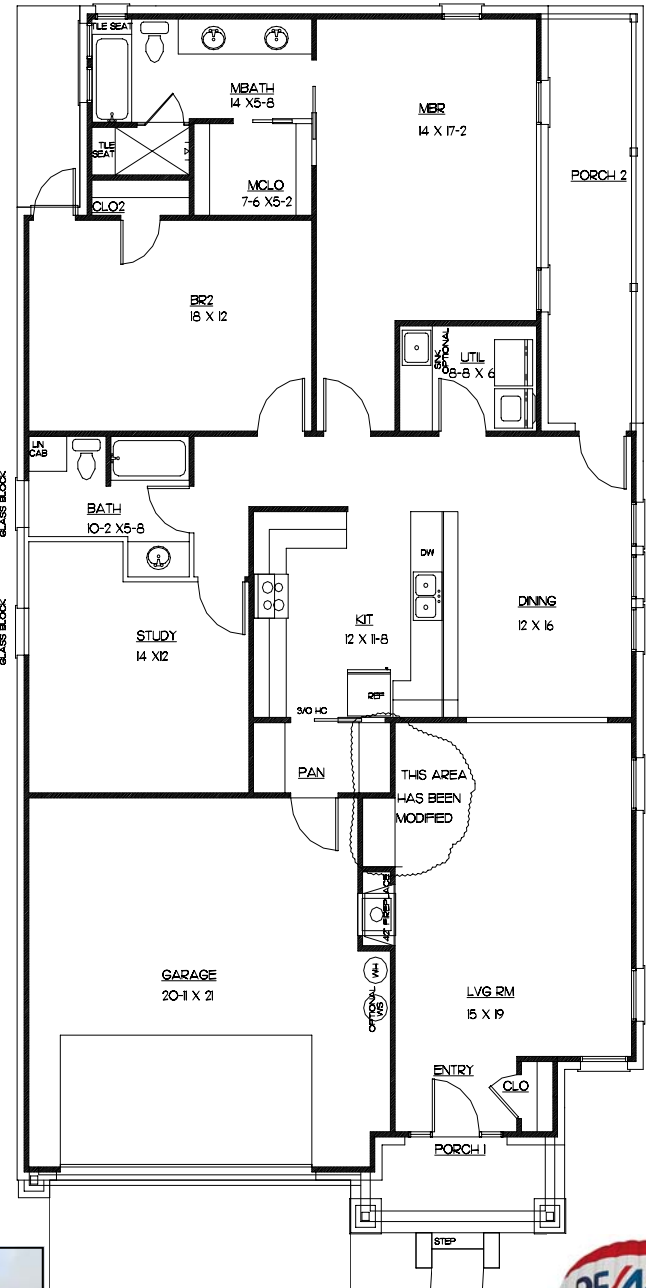
Interior Features

- 2 Bedroom, 2 Bath with Study
- Built in Craftsman Fireplace
- Tile & carpet flooring
- Custom cabinets (alder wood)
- Under counter lighting in kitchen
- Maytag Gas Appliances
- Laminate countertops w/wood nosing
- Tile Backsplash
- Large Kitchen Bar
- Recessed lighting
- Upper Cabinet in Utility
- Moen plumbing fixtures
- Pre-plumbed for water softener
- Attic stair in garage

Exterior Features

- Radiant Barrier roof sheathing
- 30 yr. dimensional shingle roof
- Brick & Hardie board
- Gutters
- Low E insulated windows
- Insulated Garage
- 14 Seer Rating Maytag HVAC
- Shrubbery & Sodding Front & back
- Sprinkler System
- Privacy fence
- In Cul-de-sac

THE TAYLOR	
LIVING AREA:	1921 SQ. FT.
GARAGE AREA:	497 SQ. FT.
PORCH AREA:	215 SQ. FT.
FOOTPRINT:	2633 SQ. FT.



Call Darlene Dartez at
RE/MAX Town & Country
 830-889-9392 cell
 830-990-8708 Office
 www.darlenesdigs.com

Each Office Independently Owned & Operated